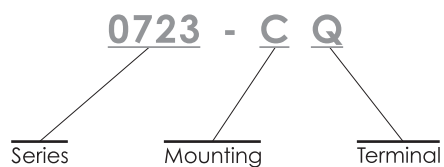
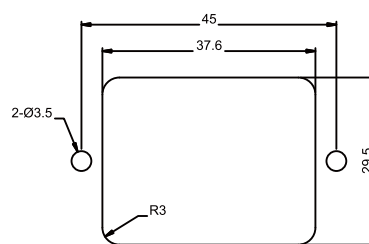
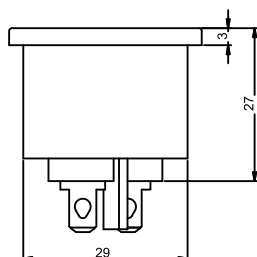
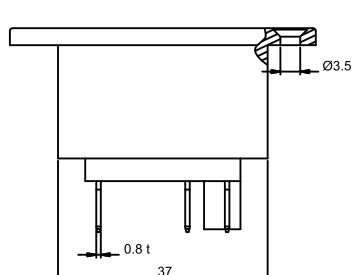
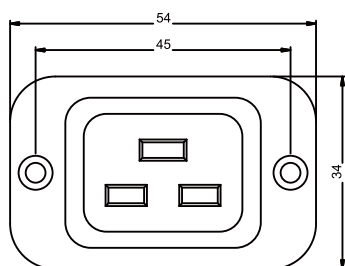


0723 Series



Specification	Outlet
Power Rating	16A 250V AC Europe 20A 250V AC North America
Electric Strength	AC 2,000V for 1 Minute
Contact Resistance	30MΩ Max.
Insulation Resistance	100MΩ Min. at 500V DC
Operating Temperature	+90°C
Materials	Thermoplastic UL Flammability 94V-0 & Copper Alloy
Mounting	C : Screw-On
Terminal	Q : Solder Tab (4.8 x 0.8) W : Solder Tab (6.3 x 0.8)

Unit : mm



PANEL CUT-OUT