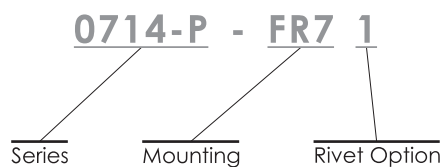
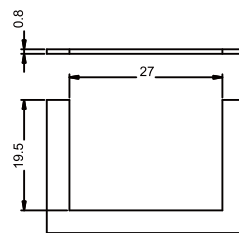
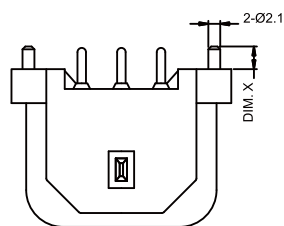
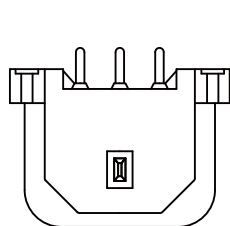
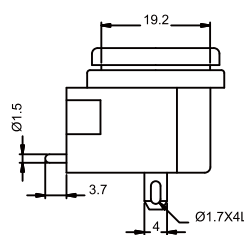
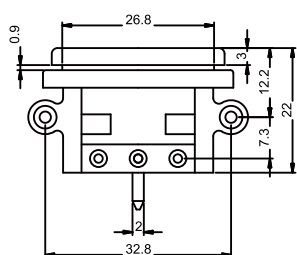
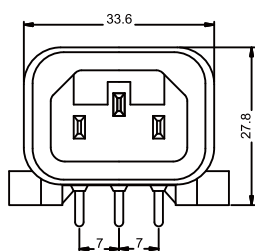


0714-P Series

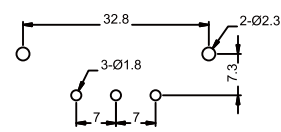


Specification	Inlet
Power Rating	10A 250V AC Europe 15A 250V AC North America
Electric Strength	AC 2,000V for 1 Minute
Contact Resistance	30MΩ Max.
Insulation Resistance	100MΩ Min. at 500V DC
Operating Temperature	+70°C
Materials	Thermoplastic UL Flammability 94V-0 & Copper Alloy
Mounting	FR7 : PCB Pin
Rivet Option	1 : With Rivet

Unit : mm



PANEL CUT-OUT



PCB LAYOUT