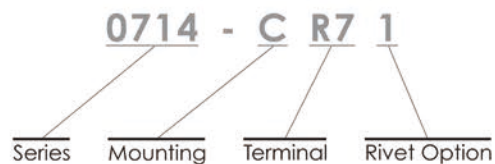


0714 Series



▶ Specification

Power Rating

10A 250V AC Europe
15A 250V AC North America

Electric Strength

AC 2,000V for 1 Minute

Contact Resistance

30MΩ Max.

Insulation Resistance

100MΩ Min. at 500V DC

Operating Temperature

+ 70°C

Materials

Thermoplastic UL Flammability
94V-0 & Copper Alloy

Mounting

C : Countersink Screw-On
F : Flat Screw-On

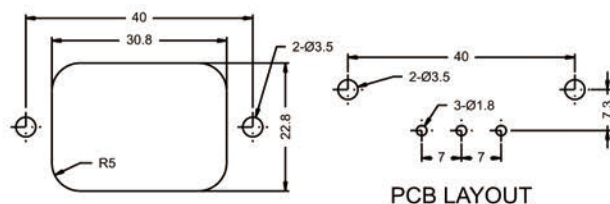
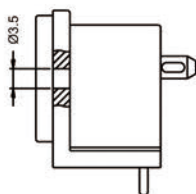
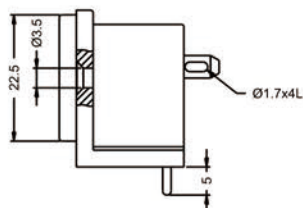
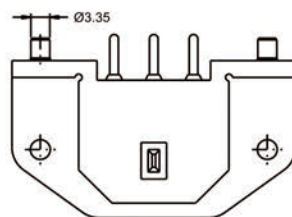
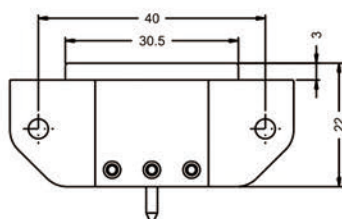
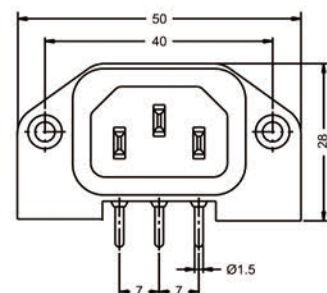
Terminal

R7 : PCB Pin

Rivet Option

1 : With Rivet

Unit : mm



PANEL CUT-OUT

PCB LAYOUT