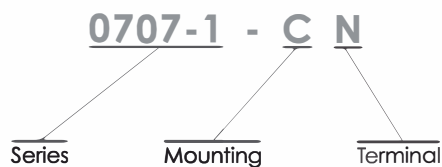
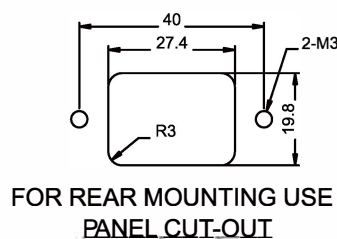
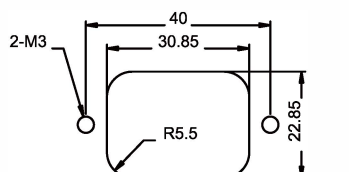
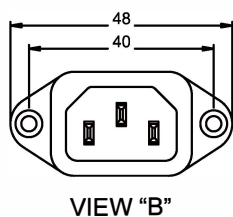
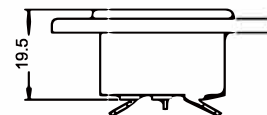
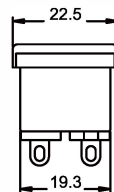
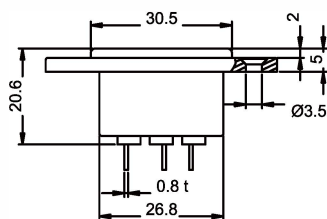
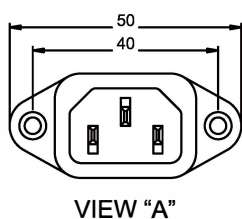


0707-1 Series



| Specification | Inlet |
|------------------------------|---|
| Power Rating | 10A 250V AC Europe 15A 250V AC North America |
| Electric Strength | AC 2,000V for 1 Minute |
| Contact Resistance | 30MΩ Max. |
| Insulation Resistance | 100MΩ Min. at 500V DC |
| Operating Temperature | +70°C |
| Materials | Thermoplastic UL Flammability 94V-0 & Copper Alloy |
| Mounting | C : Side Screw-On |
| Terminal | N : Solder Tab (4.0 x 0.8) Q : Solder Tab (4.8 x 0.8) L2 : EMI Filter Application (View B) P : PCB Pin |

Unit : mm



PCB LAYOUT