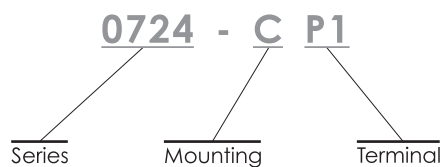
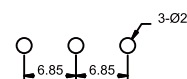
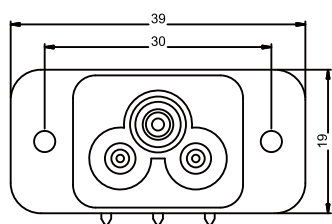


0724 Series

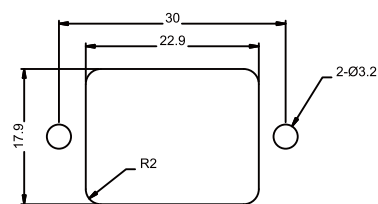
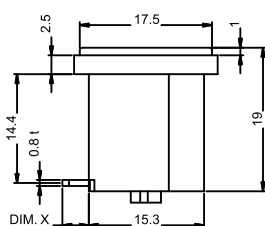
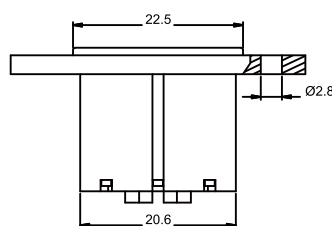


► Specification	► Inlet
Power Rating	2.5A 250V AC Europe & UL & CSA 7A 250V AC CSA, 7A 125V AC UL
Electric Strength	AC 2,000V for 1 Minute
Contact Resistance	30MΩ Max.
Insulation Resistance	100MΩ Min. at 500V DC
Operating Temperature	+70°C
Materials	Thermoplastic UL Flammability 94V-0 & Copper Alloy
Mounting	C : Upper Screw-On F : Side Screw-On
Terminal	P : PCB Pin RS : Solder Tab (2.54 x 0.8)

Unit : mm



PCB LAYOUT



PANEL CUT-OUT