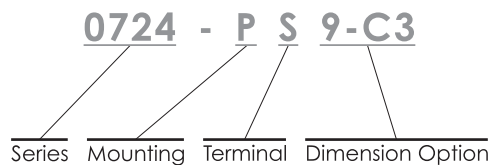
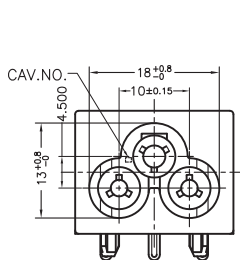


0724 Series

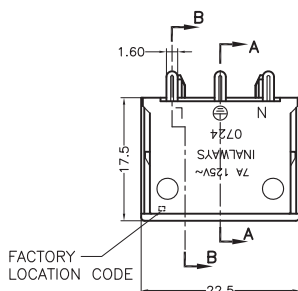


▶ Specification	▶ Inlet	
Power Rating	2.5A 250V AC Europe & UL & CSA 7A 250V AC CSA, 7A 125V AC UL	
Electric Strength	AC 2,000V for 1 Minute	
Contact Resistance	30MΩ Max.	
Insulation Resistance	100MΩ Min. at 500V DC	
Operating Temperature	+105°C	
Materials	Thermoplastic UL Flammability 94V-0 & Copper Alloy	
Mounting	P : Snap-In	
Terminal	P : PCB Pin S : Solder Tab	
Dimension Option	7 : View A 7M : View A+Metal Clip	9-C3 : View B

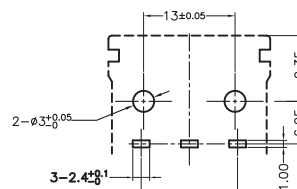
Unit : mm



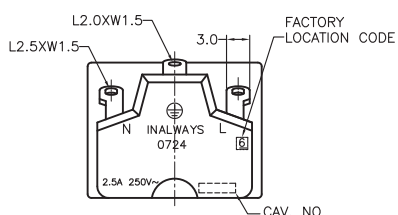
VIEW "A"



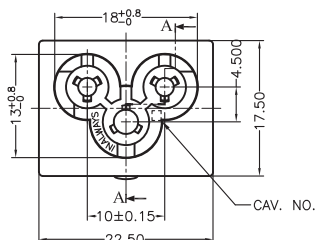
FACTORY LOCATION CODE



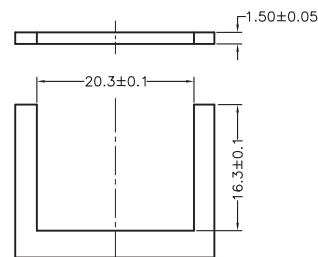
PCB LAYOUT
THICKNESS:0.8~1.6t



VIEW "B"



CAV. NO.



PCB LAYOUT

